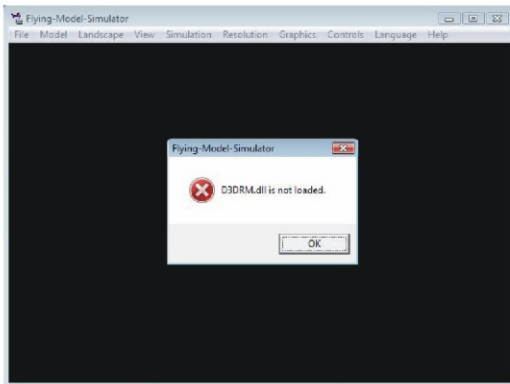


Supplementary Explanation of Installing FMS in the Windows System Vista



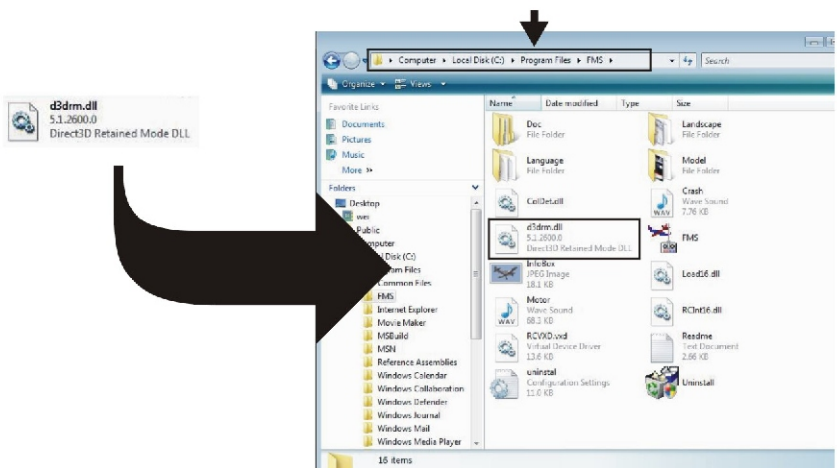
As the Windows Vista System does not support FMS, a problem as shown in the figure will occur when running the software after installation.

Solution is as follows:

1, after installing , download the Vista patch  (if it can not be found

in the simulator CD) from the website of R/C Model Fun Co.,Ltd(www.skyartec.com)

2. copy the patch to FMS installation directory and you can use FMS, the usual installation directory is C: \Program Files \ FMS.



3、 If you have any problem or need more information, please inform of me and send E-mail to me: maria@skyartec.com.

FMS 在Windows Vista下安装补充说明

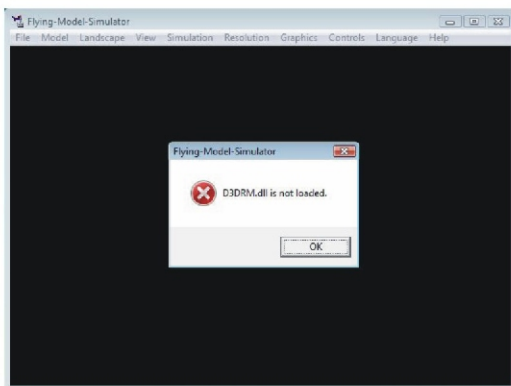
由于Windows Vista系统不支持FMS软件，所以在安装完成运行时一般会出现如图问题：

解决方案如下：

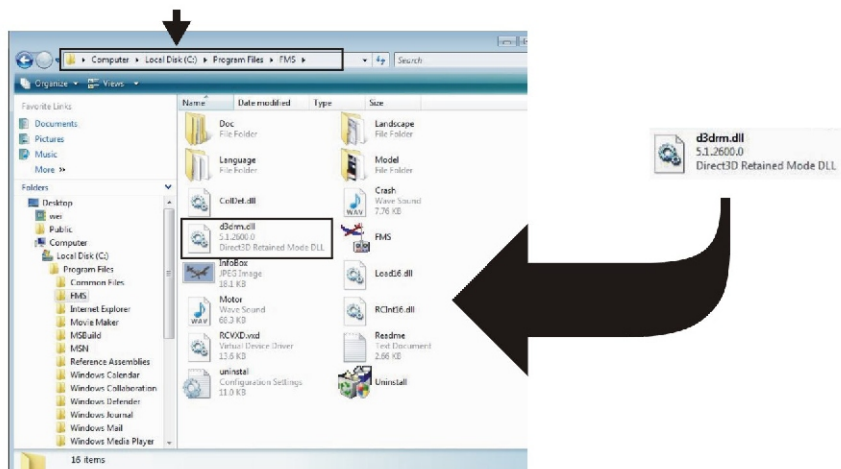
1，在安装完  后，从泉速模型网站 (www.skyartec.com) 下载Vista补丁

文件  **d3drm.dll**
5.1.2600.0
Direct3D Retained Mode DLL

（如果模拟器配套光盘没有此文件）



2，将补丁文件拷贝到FMS的安装目录下即可，一般安装目录为C:\Program Files\FMS。



3，如果仍有问题或者想了解更多的信息，给我们来电子邮件：(maria@skyartec.com)